

Datasheet

DC Power Supplies GS 60 – GS 150



Active front panel



Rear view



Passive front panel with status-LEDs

The air-cooled DC power supplies, series GS 60 – GS 150, are available in three different versions: with active front panel, with passive front panel and with status LEDs. The power supplies can be operated at full output power without duty cycle limitations. Parallel operation of several power supplies is possible. The GS 60 – GS 150 series has, like all power supplies from ADL, extremely fast automatic arc handling. Operation of the power supplies is easy and safe.

★ Highlights

- ★ Output power 6 - 15 kW
- ★ Air cooling
- ★ 19"-case, 3 HU
- ★ Floating output
- ★ Automatic arc handling
- ★ Joule mode (Option)

We are happy to help!

ADL Analoge & Digitale Leistungselektronik GmbH
Bunsenstr. 30 · D-64293 Darmstadt
www.adl-gmbh.com

Customer Support

Tel. +49 (0) 6151 86072-41 or -42
Fax +49 (0) 6151 86072-75
E-Mail: sales@adl-gmbh.com

Datasheet

Variants

Type	DC-Output			Order-No.
GS 60/800	6 kW	800 V	10 A	03Z290
GS 80/800	8 kW	800 V	17 A	03Z340
GS 100/800	10 kW	800 V	17 A	03Z390
GS 120/800	12 kW	800 V	20 A	03Z440
GS 150/800	15 kW	800 V	25 A	03Z490

We are happy to help!

ADL Analoge & Digitale Leistungselektronik GmbH
Bunsenstraße 30 · D-64293 Darmstadt
www.adl-gmbh.com

Customer Support

Tel. +49 (0) 6151 86072-41 or -42
Fax +49 (0) 6151 86072-75
E-Mail: sales@adl-gmbh.com

Datasheet

Options and Accessories - detailed Information see Datasheet “Accessories“

Type	Order-No.
Control Interfaces	
AS4 - analogue for U-, I- or P-Regulation	01Y001
AS4F - analogue for U-, I- or P-Regulation, fast Data Transfer	01Y021
AS6 - analogue for U-, I-, P-Limit Specification	01Y061
Profibus DP	01Y160
EtherCAT®	01Y170
RS232/485	01Y181
Indications	
Front panel active with 3 ½ digit Display	02Y050
Front panel passive with 3 ½ digit Display	02Y101
Status LEDs	01Y010
Connectors	
GS/GSC-Connector Set X1/X2 Harting straight	03Y020
GS/GSC Connector Set X1/X2 Harting angled	03Y040
Miscellaneous	
Remote Control RC 4	06Y401

We are happy to help!

ADL Analoge & Digitale Leistungselektronik GmbH
Bunsenstr  e 30 · D-64293 Darmstadt
www.adl-gmbh.com

Customer Support

Tel. +49 (0) 6151 86072-41 or -42
Fax +49 (0) 6151 86072-75
E-Mail: sales@adl-gmbh.com

Datasheet

Technical Data

	GS 60/800	GS 80/800	GS 100/800	GS 120/800	GS 150/800
Operational Data					
Output Power	6 kW	8 kW	10 kW	12 kW	15 kW
Output Voltage	800 V	800 V	800 V	800 V	800 V
Output Current	10 A	17 A	17 A	20 A	25 A
Indication (Option)	3 ½ digit display for current, voltage and power				
Control	Current, voltage or power controlled				
Operation Mode	External via control interface				
Set Point	0 ... 100 % of nominal value for current, voltage or power				
Output Accuracy	+ / - 1 % of nominal value for current, voltage and power				
Arc Suppression	Quenching time: 6 µs up to 3 ms, automatically Delay time: 6 µs up to 10 ms, automatically				
Mains Input Connection					
Line Voltage	3 x 400 V, + / - 10 %, 50/60 Hz, PE,				
Fusing	16 A	16 A	20 A	25 A	25 A
Mains Cable	4 x 1.5 mm ²	4 x 1.5 mm ²	4 x 2.5 mm ²	4 x 4 mm ²	4 x 4 mm ²
Mains Connector (X2)	Harting Han-Modular Compact				
Power Consumption	6.6 kVA	9 kVA	11 kVA	13.2 kVA	16.5 kVA
DC-Output Connection					
DC-Cable JZ-600-Y-CY	2 x 1.5 mm ²	2 x 2.5 mm ²	2 x 2.5 mm ²	2 x 2.5 mm ²	2 x 4 mm ²
DC-Connection (X1)	Harting Han-Modular Compact				
Cooling System					
Air Cooling	Built-in fan, maximum ambient temperature 40° C				
Fan Noise Emission	L _{pA} < 70 dB (A)				
Mechanical Data					
Size (without Plug)	Width: 437 mm (19"), Height: 132.5 mm (3 HU), Length 540 mm				
Weight (without Packaging)	27 kg	29 kg	29 kg	29 kg	31 kg

We are happy to help!

ADL Analoge & Digitale Leistungselektronik GmbH
Bunsenstr. 30 · D-64293 Darmstadt
www.adl-gmbh.com

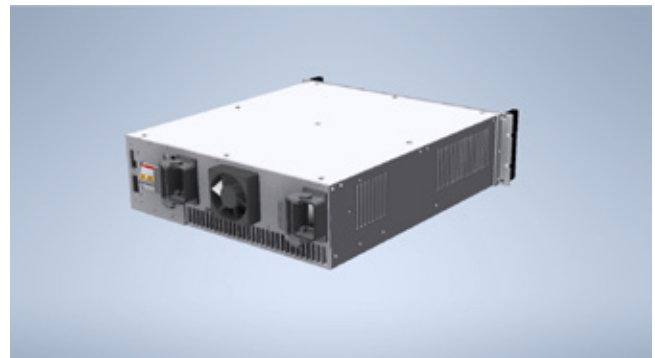
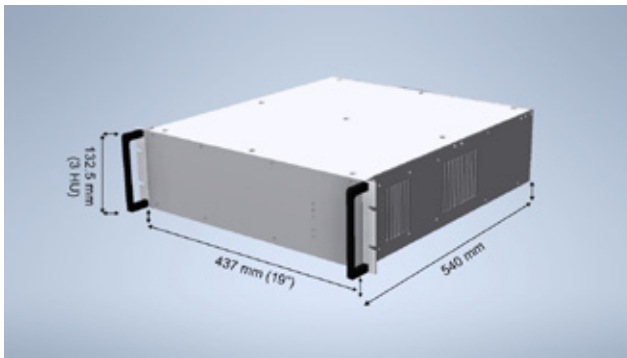
Customer Support

Tel. +49 (0) 6151 86072-41 or -42
Fax +49 (0) 6151 86072-75
E-Mail: sales@adl-gmbh.com



Datasheet

Dimensions



© 2022 ADL Analoge & Digitale Leistungselektronik GmbH. All rights reserved.

ADL products are constantly improved. ADL therefore reserves the right to make technical changes without prior notice or obligation. To the best of our knowledge, the information contained in this product presentation (short version) is the most accurate available as the date of the current edition. The information is not binding.

We are happy to help!

ADL Analoge & Digitale Leistungselektronik GmbH
Bunsenstraße 30 · D-64293 Darmstadt
www.adl-gmbh.com

Customer Support

Tel. +49 (0) 6151 86072-41 or -42
Fax +49 (0) 6151 86072-75
E-Mail: sales@adl-gmbh.com