



Datasheet

DC Power Supplies GSW 100 – GSW 300



GSW with active front panel



GSW with passive front panel



GSW with status-LEDs



Rear view



GSW with air baffle

In parallel operation, output power can be increased up to 240 kW. Thanks to a special circuit design, a "Master-Slave" wiring system is unnecessary. Efficient water cooling guarantees highest reliability even in non-air-conditioned rooms. The power supplies can be operated manually via the front panel or via control interface. There are different front panel and control interface variants available. The extremely fast arc handling works completely automatically and adapts optimally to every process.

★ Highlights

- ★ Output power 10 kW – 30 kW
- ★ Parallel operation up to 240 kW
- ★ Water cooling
- ★ Magnetic valve control (Option)
- ★ 19"-case, 3 HU
- ★ Floating output
- ★ Automatic arc handling

We are happy to help!

ADL Analoge & Digitale Leistungselektronik GmbH
Bunsenstr  e 30 · D-64293 Darmstadt
www.adl-gmbh.com

Customer Support

Tel. +49 (0) 6151 86072-41 or -42
Fax +49 (0) 6151 86072-75
E-Mail: sales@adl-gmbh.com

Datasheet

Variants

Type	DC-Output			Order-No.
GSW 100/500	10 kW	500 V	40 A	06Z010
GSW 100/800	10 kW	800 V	20 A	06Z040
GSW 100/1000	10 kW	1000 V	18 A	06Z041
GSW 150/400	15 kW	400 V	80 A	06Z055
GSW 150/500	15 kW	500 V	60 A	06Z060
GSW 150/600	15 kW	600 V	50 A	06Z070
GSW 150/750	15 kW	750 V	38 A	06Z080
GSW 150/800	15 kW	800 V	30 A	06Z090
GSW 150/1000	15 kW	1000 V	25 A	06Z100
GSW 200/500	20 kW	500 V	70 A	06Z120
GSW 200/750	20 kW	750 V	50 A	06Z135
GSW 200/800	20 kW	800 V	40 A	06Z140
GSW 200/900	20 kW	900 V	40 A	06Z145
GSW 200/1000	20 kW	1000 V	35 A	06Z150
GSW 250/750	25 kW	750 V	60 A	06Z180
GSW 250/800	25 kW	800 V	50 A	06Z190
GSW 250/900	25 kW	900 V	50 A	06Z195
GSW 250/1000	25 kW	1000 V	45 A	06Z200
GSW 300/500	30 kW	500 V	70 A	06Z220
GSW 300/750	30 kW	750 V	66 A	06Z230
GSW 300/800	30 kW	800 V	60 A	06Z240
GSW 300/1000	30 kW	1000 V	50 A	06Z260



Datasheet

Options and Accessories - detailed Information see Datasheet "Accessories"

Type	Order-No.
Control Interfaces	
AS4 - analogue for U-, I- or P-Regulation	01Y001
AS4F - analogue for U-, I- or P-Regulation, fast Data Transfer	01Y021
AS6 - analogue for U-, I-, P-Limit Specification	01Y061
Profibus DP	01Y160
EtherCAT®	01Y170
RS232/485	01Y181
Indications	
Front Panel active with 3 ½ digit Display	02Y050
Front Panel passive with 3 ½ digit Display	02Y101
Status-LEDs	01Y010
Connectors	
GSW-Connector Set X1 / X2 Harting straight	03Y120
GSW-Connector Set X1 / X2 Harting angled	03Y140
GSW-Water Connection Festo	04Y100
GSW-Water Connection Walther (default)	04Y400
Walther Couplings straight	04Y420
Walther Couplings angled	04Y440
Magnetic Valve Control with 24 V DC-Output	04Y025
Magnetic Valve 24 V with Control Cable (2 m)	04Y030
Miscellaneous	
Line Voltage 3 x 400 V (default)	10Y022
Line Voltage 3 x 440 V	10Y025
Line Voltage 3 x 480 V	10Y030
Arc-Link for Parallel Operation	10Y100
Cathode Clamp Diode	50Y001
GSW-Air Baffle, 3 Pieces	05Y050
Plasma Control	50Y051
Remote Control RC 4	06Y401

Datasheet

Technical Data

	GSW 100/500	GSW 100/800	GSW 100/1000	GSW 150/400 *	GSW 150/500
Operational Data					
Output Power	10 kW	10 kW	10 kW	15 kW	15 kW
Output Voltage	500 V	800 V	1000 V	400 V	500 V
Output Current	40 A	20 A	18 A	80 A	60 A
Indications (Option)	3 ½ digit display for current, voltage and power				
Control	Current, voltage or power controlled				
Operation Mode	Manually via front panel or external via control interface				
Set Point	0 ... 100 % of nominal value for current, voltage or power				
Output Accuracy	+ / - 1 % of nominal value for current, voltage and power				
Arc Suppression	Quenching time: 6 µs up to 3 ms, automatically Delay time: 6 µs up to 10 ms, automatically				
Mains Input Connection					
Line Voltage	3 x 400 V, + / - 10 %, 50/60 Hz, PE, (Option: 3 x 440 V or 3 x 480 V)				
Fusing	3 x 20 A	3 x 20 A	3 x 20 A	3 x 25 A	3 x 25 A
Mains Cable	4 x 2.5 mm ²	4 x 2.5 mm ²	4 x 2.5 mm ²	4 x 4 mm ²	4 x 4 mm ²
Mains Connector (X2)	Harting Han-k4/0				
Power Consumption	11 kVA	11 kVA	11 kVA	16.5 kVA	16.5 kVA
DC-Output Connection					
DC-Cable JZ-600-Y-CY	2 x 10 mm ²	2 x 2.5 mm ²	2 x 2.5 mm ²	2 x 25 mm ² *	2 x 16 mm ²
DC-Connection (X1)	Harting Han 2 MOD				
Cooling System					
Water Cooling	Flow > 3 l / min, 2 to 8 Bar, < 40° C				
Water Connection	Walther CT-003 (Option: Festo KQ2 10 mm)				
Water Cooling Capacity	500 W	500 W	500 W	680 W	680 W
Air Cooling	Built-in fan, maximum ambient temperature 40° C				
Air Cooling Capacity	80 W	80 W	80 W	80 W	80 W
Fan Noise Emission	L _{pA} < 70 dB (A)				
Mechanical Data					
Size (without Plug)	Width: 445 mm (19"), Height: 132.5 mm (3 HE), Length 768 mm				
Weight (without Packaging)	42 kg	42 kg	42 kg	44 kg	44 kg

*alternatively 24 x 1.5 mm²

Datasheet

Technical Data

	GSW 150/600	GSW 150/750	GSW 150/800	GSW 150/1000	GSW 200/500
Operational Data					
Output Power	15 kW	15 kW	15 kW	15 kW	20 kW
Output Voltage	600 V	750 V	800 V	1000 V	500 V
Output Current	50 A	38 A	30 A	25 A	70 A
Indications (Option)	3 ½ digit display for current, voltage and power				
Control	Current, voltage or power controlled				
Operation Mode	Manually via front panel or external via control interface				
Set Point	0 ... 100 % of nominal value for current, voltage or power				
Output Accuracy	+ / - 1 % of nominal value for current, voltage and power				
Arc Suppression	Quenching time: 6 µs up to 3 ms, automatically Delay time: 6 µs up to 10 ms, automatically				
Mains Input Connection					
Line Voltage	3 x 400 V, + / - 10 %, 50/60 Hz, PE, (Option: 3 x 440 V or 3 x 480 V)				
Fusing	3 x 25 A	3 x 25 A	3 x 25 A	3 x 25 A	3 x 40 A
Mains Cable	4 x 4 mm ²	4 x 4 mm ²	4 x 4 mm ²	4 x 4 mm ²	4 x 6 mm ²
Mains Connector (X2)	Harting Han-k4/0				
Power Consumption	16.5 kVA	16.5 kVA	16.5 kVA	16.5 kVA	22 kVA
DC-Output Connection					
DC-Cable JZ-600-Y-CY	2 x 10 mm ²	2 x 10 mm ²	2 x 6 mm ²	2 x 4 mm ²	2 x 16 mm ²
DC-Connection (X1)	Harting Han 2 MOD				
Cooling System					
Water Cooling	Flow > 3 l / min, 2 to 8 Bar, < 40° C				
Water Connection	Walther CT-003 (Option: Festo KQ2 10 mm)				
Water Cooling Capacity	680 W	680 W	680 W	680 W	950 W
Air Cooling	Built-in fan, maximum ambient temperature 40° C				
Air Cooling Capacity	80 W	80 W	80 W	80 W	150 W
Fan Noise Emission	L _{pA} < 70 dB (A)				
Mechanical Data					
Size (without Plug)	Width: 445 mm (19"), Height: 132.5 mm (3 HE), Length 768 mm				
Weight (without Packaging)	44 kg	44 kg	44 kg	44 kg	49 kg

Datasheet

Technical Data

	GSW 200/750	GSW 200/800	GSW 200/900	GSW 200/1000	GSW 250/750
Operational Data					
Output Power	20 kW	20 kW	20 kW	20 kW	25 kW
Output Voltage	750 V	800 V	900 V	1000 V	750 V
Output Current	50 A	40 A	40 A	35 A	60 A
Indications (Option)	3 ½ digit display for current, voltage and power				
Control	Current, voltage or power controlled				
Operation Mode	Manually via front panel or external via control interface				
Set Point	0 ... 100 % of nominal value for current, voltage or power				
Output Accuracy	+ / - 1 % of nominal value for current, voltage and power				
Arc Suppression	Quenching time: 6 µs up to 3 ms, automatically Delay time: 6 µs up to 10 ms, automatically				
Mains Input Connection					
Line Voltage	3 x 400 V, + / - 10 %, 50/60 Hz, PE, (Option: 3 x 440 V or 3 x 480 V)				
Fusing	3 x 40 A	3 x 22 A	3 x 22 A	3 x 22 A	3 x 28 A
Mains Cable	4 x 6 mm ²	4 x 6 mm ²	4 x 6 mm ²	4 x 6 mm ²	4 x 10 mm ²
Mains Connector (X2)	Harting Han-k4/0				
Power Consumption	22 kVA	22 kVA	22 kVA	22 kVA	28 kVA
DC-Output Connection					
DC-Cable JZ-600-Y-CY	2 x 10 mm ²	2 x 10 mm ²	2 x 10 mm ²	2 x 6 mm ²	2 x 16 mm ²
DC-Connection (X1)	Harting Han 2 MOD				
Cooling System					
Water Cooling	Flow > 3 l / min, 2 to 8 Bar, < 40° C				
Water Connection	Walther CT-003 (Option: Festo KQ2 10 mm)				
Water Cooling Capacity	900 W	900 W	900 W	900 W	1100 W
Air Cooling	Built-in fan, maximum ambient temperature 40° C				
Air Cooling Capacity	100 W	100 W	100 W	100 W	110 W
Fan Noise Emission	L _{pA} < 70 dB (A)				
Mechanical Data					
Size (without Plug)	Width: 445 mm (19"), Height: 132.5 mm (3 HE), Length 768 mm				
Weight (without Packaging)	49 kg	49 kg	49 kg	49 kg	51 kg

Datasheet

Technical Data

	GSW 250/800	GSW 250/900	GSW 250/1000	GSW 300/500	GSW 300/750
Operational Data					
Output Power	25 kW	25 kW	25 kW	30 kW	30 kW
Output Voltage	800 V	900 V	1000 V	500 V	750 V
Output Current	50 A	50 A	45 A	70 A	66 A
Indications (Option)	3 ½ digit display for current, voltage and power				
Control	Current, voltage or power controlled				
Operation Mode	Manually via front panel or external via control interface				
Set Point	0 ... 100 % of nominal value for current, voltage or power				
Output Accuracy	+ / - 1 % of nominal value for current, voltage and power				
Arc Suppression	Quenching time: 6 µs up to 3 ms, automatically Delay time: 6 µs up to 10 ms, automatically				
Mains Input Connection					
Line Voltage	3 x 400 V, + / - 10 %, 50/60 Hz, PE, (Option: 3 x 440 V or 3 x 480 V)				
Fusing	3 x 28 A	3 x 50 A	3 x 50 A	3 x 63 A	3 x 63 A
Mains Cable	4 x 10 mm ²	4 x 10 mm ²	4 x 10 mm ²	4 x 10 mm ²	4 x 10 mm ²
Mains Connector (X2)	Harting Han-k4/0				
Power Consumption	28 kVA	28 kVA	28 kVA	33 kVA	33 kVA
DC-Output Connection					
DC-Cable JZ-600-Y-CY	2 x 10 mm ²	2 x 10 mm ²	2 x 10 mm ²	2 x 16 mm ²	2 x 16 mm ²
DC-Connection (X1)	Harting Han 2 MOD				
Cooling System					
Water Cooling	Flow > 3 l / min, 2 to 8 Bar, < 40° C				
Water Connection	Walther CT-003 (Option: Festo KQ2 10 mm)				
Water Cooling Capacity	1100 W	1100 W	1100 W	1300 W	1300 W
Air Cooling	Built-in fan, maximum ambient temperature 40° C				
Air Cooling Capacity	110 W	110 W	110 W	150 W	150 W
Fan Noise Emission	L _{pA} < 70 dB (A)				
Mechanical Data					
Size (without Plug)	Width: 445 mm (19"), Height: 132.5 mm (3 HE), Length 768 mm				
Weight (without Packaging)	51 kg	51 kg	51 kg	53 kg	53 kg



Datasheet

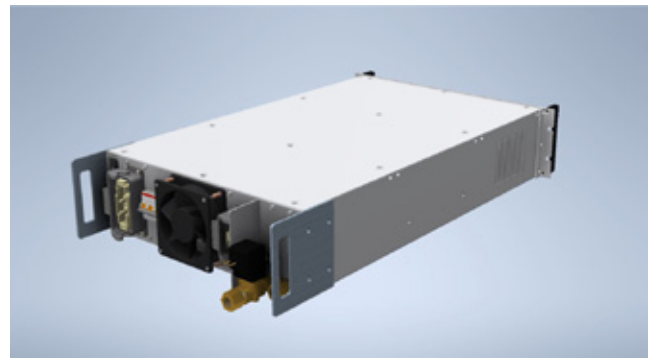
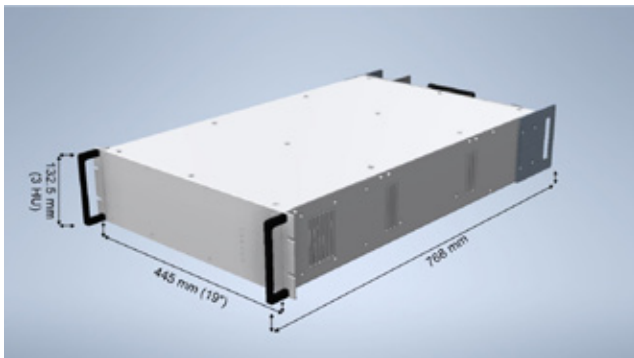
Technical Data

	GSW 300/800	GSW 300/1000			
Operational Data					
Output Power	30 kW	30 kW			
Output Voltage	800 V	1000 V			
Output Current	60 A	50 A			
Indications (Option)	3 ½ digit display for voltage, current and power				
Control	Current, voltage or power controlled				
Operation Mode	Manually via front panel or external via control interface				
Set Point	0 ... 100 % of nominal value for current, voltage or power				
Output Accuracy	+ / - 1 % of nominal value for current, voltage and power				
Arc Suppression	Quenching time: 6 µs up to 3 ms, automatically Delay time: 6 µs up to 10 ms, automatically				
Mains Input Connection					
Line Voltage	3 x 400 V, + / - 10 %, 50/60 Hz, PE, (Option: 3 x 440 V or 3 x 480 V)				
Fusing	3 x 63 A	3 x 63 A			
Mains Cable	4 x 10 mm ²	4 x 10 mm ²			
Mains Connector (X2)	Harting Han-k4/0				
Power Consumption	33 kVA	33 kVA			
DC-Output Connection					
DC-Cable JZ-600-Y-CY	2 x 16 mm ²	2 x 10 mm ²			
DC-Connection (X1)	Harting Han 2 MOD				
Cooling System					
Water Cooling	Flow > 3 l / min, 2 to 8 Bar, < 40° C				
Water Connection	Walther CT-003 (Option: Festo KQ2 10 mm)				
Water Cooling Capacity	1300 W	1300 W			
Air Cooling	Built-in fan, maximum ambient temperature 40° C				
Air Cooling Capacity	150 W	150 W			
Fan Noise Emission	L _{pA} < 70 dB (A)				
Mechanical Data					
Size (without Plug)	Width: 445 mm (19"), Height: 132.5 mm (3 HE), Length 768 mm				
Weight (without Packaging)	53 kg	53 kg			



Datasheet

Dimensions



© 2022 ADL Analoge & Digitale Leistungselektronik GmbH. All rights reserved.

ADL products are constantly improved. ADL therefore reserves the right to make technical changes without prior notice or obligation. To the best of our knowledge, the information contained in this product presentation (short version) is the most accurate available as the date of the current edition. The information is not binding.

We are happy to help!

ADL Analoge & Digitale Leistungselektronik GmbH
Bunsenstr. 30 · D-64293 Darmstadt
www.adl-gmbh.com

Customer Support

Tel. +49 (0) 6151 86072-41 or -42
Fax +49 (0) 6151 86072-75
E-Mail: sales@adl-gmbh.com