



Datasheet

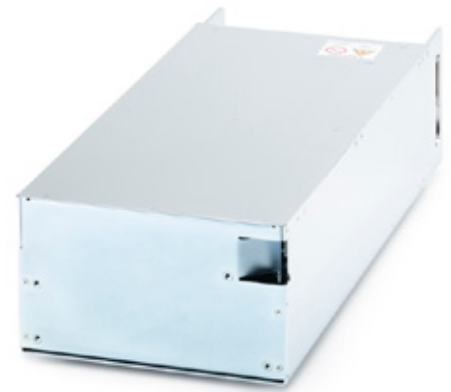
DC Power Supplies GX 50 – GX 150



GX with display



GX with status LEDs



GX with blind case



Rear view



Duo-GX open

GX sputtering power supplies are able to eliminate up to 40,000 arcs per second automatically. This extreme capability combined with the small size of the power supply are significant features that make the series GX outstanding. The power supplies can be operated at full output power without operating time limitations, and they can also be interconnected to extend power.

★ Highlights

- ★ Output power 5 kW – 15 kW
- ★ Water cooling
- ★ Magnetic valve control (optional)
- ★ ½ 19"-case, 3 HU
- ★ Floating output
- ★ Automatic arc handling

We are happy to help!

ADL Analoge & Digitale Leistungselektronik GmbH
Bunsenstr. 30 · D-64293 Darmstadt
www.adl-gmbh.com

Customer Support

Tel. +49 (0) 6151 86072-41 or -42
Fax +49 (0) 6151 86072-75
E-Mail: sales@adl-gmbh.com

Datasheet

Variants

Type	DC-Output			Order-No.
GX 50/250	5 kW	250 V	50 A	07Z010
GX 50/800	5 kW	800 V	14 A	07Z005
GX 50/1000	5 kW	1000 V	10 A	07Z015
GX 60/800	6 kW	800 V	15 A	07Z040
GX 60/1000	6 kW	1000 V	12 A	07Z045
GX 80/800	8 kW	800 V	20 A	07Z090
GX 80/1000	8 kW	1000 V	16 A	07Z099
GX 100/400	10 kW	400 V	38 A	07Z141
GX 100/600	10 kW	600 V	30 A	07Z142
GX 100/800	10 kW	800 V	25 A	07Z140
GX 100/1000	10 kW	1000 V	20 A	07Z149
GX 120/200	12 kW	200 V	60 A	07Z151
GX 120/800	12 kW	800 V	30 A	07Z190
GX 150/800	15 kW	800 V	38 A	07Z240
GX 150/1000	15 kW	1000 V	30 A	07Z249

We are happy to help!

ADL Analoge & Digitale Leistungselektronik GmbH
Bunsenstr  e 30 · D-64293 Darmstadt
www.adl-gmbh.com

Customer Support

Tel. +49 (0) 6151 86072-41 or -42
Fax +49 (0) 6151 86072-75
E-Mail: sales@adl-gmbh.com

Datasheet

Options and Accessories - detailed Information see Datasheet "Accessories"

Type	Order-No.
Control Interfaces	
AS4 - analogue for U-, I- or P-Regulation	01Y001
AS4F - analogue for U-, I- or P-Regulation, fast Data Transfer	01Y021
AS6 - analogue for U-, I-, P-Limit Specification	01Y061
Profibus DP	01Y160
EtherCAT®	01Y170
RS232/485	01Y181
Indications	
GX Display	01Y081
GX Status-LEDs	01Y071
Connectors	
GX-Connector Set X1 / X2 Harting straight	03Y220
GX-Connector Set X1 / X2 Harting angled	03Y240
GX-Water Connection Festo	04Y100
GX- Water Connection Walther (default)	04Y400
Walther Couplings straight	04Y420
Walther Couplings angled	04Y440
Magnetic Valve Control with 24 V DC-Output	04Y035
Magnetic Valve 24 V with Control Cable (2 m)	04Y030
Miscellaneous	
Line Voltage 3 x 400 V (default)	10Y022
Line Voltage 3 x 440 V	10Y025
Line Voltage 3 x 480 V	10Y030
Line Voltage 3 x 208 V (only GX 50, GX 60 and GX 80)	10Y015
Arc-Link for Parallel Operation	10Y100
Bias Voltage Control	10Y040
19" Mounting Set Single-GX	03Y093
19" Mounting Set Duo-GX	03Y091
Remote Control RC 4	06Y401

Datasheet

Technical Data

	GX 50/250	GX 50/800	GX 50/1000	GX 60/800	GX 60/1000
Operational Data					
Output Power	5 kW	5 kW	5 kW	6 kW	6 kW
Output Voltage	250 V	800 V	1000 V	800 V	1000 V
Output Current	50 A	14 A	10 A	15 A	12 A
Indications (Option)	3 ½ digit display for current, voltage or power				
Control	Current, voltage or power controlled				
Operation Mode	External via control interface				
Set Point	0 ... 100 % of nominal value for current, voltage or power				
Output Accuracy	+ / - 1 % of nominal value for current, voltage and power				
Arc Suppression	Quenching time: 6 µs up to 3 ms, automatically Delay time: 6 µs up to 10 ms, automatically				
Mains Input Connection					
Line Voltage	3 x 400 V, + / - 10 %, 50/60 Hz, PE, (Option: 3 x 440 V, 3 x 480 V or 3 x 208 V)				
Fusing	3 x 16 A	3 x 16 A	3 x 16 A	3 x 16 A	3 x 16 A
Mains Cable	4 x 1.5 mm ²	4 x 1.5 mm ²	4 x 1.5 mm ²	4 x 1.5 mm ²	4 x 1.5 mm ²
Mains Connector (X2)	Harting Han-Modular Compact				
Power Consumption	6 kVA	6 kVA	6 kVA	6.6 kVA	6.6 kVA
DC-Output Connection					
DC-Cable JZ-600-Y-CY	2 x 10 mm ²	2 x 2.5 mm ²	2 x 2.5 mm ²	2 x 2.5 mm ²	2 x 2.5 mm ²
DC-Connection (X1)	Harting Han-Modular Compact				
Cooling System					
Water Cooling	Flow > 1.5 l / min, 2 to 8 Bar, < 40° C				
Water Connection	Walther CT-003 (Option: Festo KQ2 10 mm)				
Water Cooling Capacity	300 W	300 W	300 W	300 W	300 W
Air Cooling	Built-in fan, maximum ambient temperature 40° C				
Air Cooling Capacity	45 W	45 W	45 W	45 W	45 W
Fan Noise Emission	L _{pA} < 70 dB (A)				
Mechanical Data					
Size (without Plug)	Width: 216 mm (½ 19"), Height: 130 mm (3 HU), Length 591.5 mm				
Weight (without Packaging)	21 kg	21 kg	21 kg	21 kg	21 kg

Datasheet

Technical Data

	GX 80/800	GX 80/1000	GX 100/400	GX 100/600	GX 100/800
Operational Data					
Output Power	8 kW	8 kW	10 kW	10 kW	10 kW
Output Voltage	800 V	1000 V	400 V	600 V	800 V
Output Current	20 A	16 A	38 A	30 A	25 A
Indications (Option)	3 ½ digit display for current, voltage or power				
Control	Current, voltage or power controlled				
Operation Mode	External via control interface				
Set Point	0 ... 100 % of nominal value for current, voltage or power				
Output Accuracy	+ / - 1 % of nominal value for current, voltage and power				
Arc Suppression	Quenching time: 6 µs up to 3 ms, automatically Delay time: 6 µs up to 10 ms, automatically				
Mains Input Connection					
Line Voltage	3 x 400 V, + / - 10 %, 50/60 Hz, PE, (Option: 3 x 440 V, 3 x 480 V or 3 x 208 V, only GX 80)				
Fusing	3 x 20 A	3 x 20 A	3 x 20 A	3 x 20 A	3 x 20 A
Mains Cable	4 x 2.5 mm ²	4 x 2.5 mm ²	4 x 2.5 mm ²	4 x 2.5 mm ²	4 x 2.5 mm ²
Mains Connector (X2)	Harting Han-Modular Compact				
Power Consumption	9 kVA	9 kVA	11 kVA	11 kVA	11 kVA
DC-Output Connection					
DC-Cable JZ-600-Y-CY	2 x 2.5 mm ²	2 x 2.5 mm ²	2 x 6 mm ²	2 x 6 mm ²	2 x 4 mm ²
DC-Connection (X1)	Harting Han-Modular Compact				
Cooling System					
Water Cooling	Flow > 1.5 l / min, 2 to 8 Bar, < 40° C				
Water Connection	Walther CT 003 (Option: Festo KQ2 10 mm)				
Water Cooling Capacity	400 W	400 W	500 W	500 W	500 W
Air Cooling	Built-in fan, maximum ambient temperature 40° C				
Air Cooling Capacity	50 W	50 W	50 W	50 W	50 W
Fan Noise Emission	L _{pA} < 70 dB (A)				
Mechanical Data					
Size (without Plug)	Width: 216 mm (½ 19"), Height: 130 mm (3 HU), Length 591.5 mm				
Weight (without Packaging)	23 kg	23 kg	23 kg	23 kg	23 kg

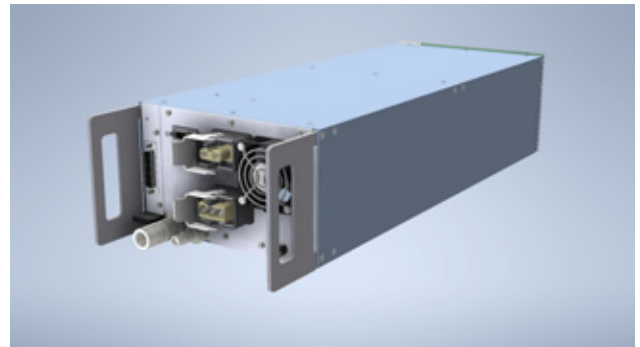
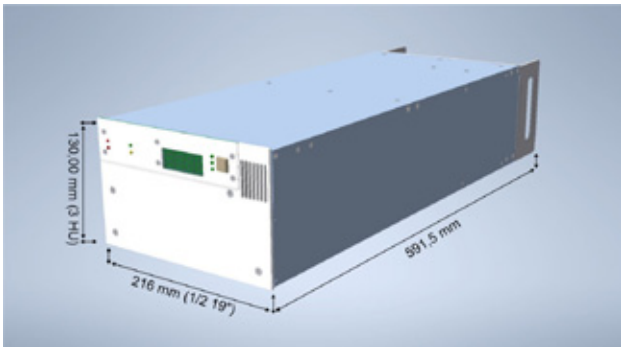
Datasheet

Technical Data

	GX 100/1000	GX 120/200	GX 120/800	GX 150/800	GX 150/1000
Operational Data					
Output Power	10 kW	12 kW	12 kW	15 kW	15 kW
Output Voltage	1000 V	200 V	800 V	800 V	1000 V
Output Current	20 A	60 A	30 A	38 A	30 A
Indications (Option)	3 ½ digit display for current, voltage or power				
Control	Current, voltage or power controlled				
Operation Mode	External via control interface				
Set Point	0 ... 100 % of nominal value for current, voltage or power				
Output Accuracy	+ / - 1 % of nominal value for current, voltage and power				
Arc Suppression	Quenching time: 6 µs up to 3 ms, automatically Delay time: 6 µs up to 10 ms, automatically				
Mains Input Connection					
Line Voltage	3 x 400 V, + / - 10 %, 50/60 Hz, PE, (Option: 3 x 440 V, 3 x 480 V)				
Fusing	3 x 20 A	3 x 25 A	3 x 25 A	3 x 25 A	3 x 25 A
Mains Cable	4 x 4 mm ²	4 x 4 mm ²	4 x 4 mm ²	4 x 4 mm ²	4 x 4 mm ²
Mains Connector (X2)	Harting Han-Modular Compact				
Power Consumption	11 kVA	13.2 kVA	13.2 kVA	16.5 kVA	16.5 kVA
DC-Output Connection					
DC-Cable JZ-600-Y-CY	2 x 4 mm ²	2 x 16 mm ²	2 x 6 mm ²	2 x 6 mm ²	2 x 16 mm ²
DC-Connection (X1)	Harting Han-Modular Compact				
Cooling System					
Water Cooling	Flow > 1.5 l / min, 2 to 8 Bar, < 40° C				
Water Connection	Walther CT-003 (Option: Festo KQ2 10 mm)				
Water Cooling Capacity	500 W	600 W	600 W	750 W	750 W
Air Cooling	Built-in fan, maximum ambient temperature 40° C				
Air Cooling Capacity	50 W	60 W	60 W	60 W	60 W
Fan Noise Emission	L _{pA} < 70 dB (A)				
Mechanical Data					
Size (without Plug)	Width: 216 mm (½ 19"), Height: 130 mm (3 HU), Length 591.5 mm				
Weight (without Packaging)	23 kg	23 kg	23 kg	25 kg	25 kg

Datasheet

Dimensions



Exemplary illustration, front panel and rear view can differ, depending on device type, nevertheless, dimensions are the same.

© 2024 ADL Analoge & Digitale Leistungselektronik GmbH. All rights reserved.

ADL products are constantly improved. ADL therefore reserves the right to make technical changes without prior notice or obligation. To the best of our knowledge, the information contained in this product presentation (short version) is the most accurate available as the date of the current edition. The information is not binding.

We are happy to help!

ADL Analoge & Digitale Leistungselektronik GmbH
Bunsenstraße 30 · D-64293 Darmstadt
www.adl-gmbh.com

Customer Support

Tel. +49 (0) 6151 86072-41 or -42
Fax +49 (0) 6151 86072-75
E-Mail: sales@adl-gmbh.com