

Datasheet

Technical Data

	HXF 150/500	HXF 150/600	HXF 150/800
Operational Data			
Nominal Power	15 kW	15 kW	15 kW
Output Voltage	500 V	600 V	800 V
Output Current	60 A	50 A	30 A
Indication (Option)	3 ½-digit display for current, voltage and power		
Control	Current, voltage or power controlled		
Operation Mode	External via control interface		
Set Point	0 ... 100 % of nominal value for current, voltage or power		
Output Accuracy	+ / - 1 % of nominal value for current, voltage and power		
Arc Suppression	Quenching time: 2 µs to ca. 20 µs, automatically Delay time: 10 µs to ca. 50 µs, automatically		
Mains Input Connection			
Line Voltage	3 x 400 V, + / - 10 %, 50/60 Hz, PE, (Option: 3 x 440 V or 3 x 480 V)		
Fusing	3 x 25 A	3 x 25 A	3 x 25 A
Mains Cable	4 x 4 mm ²	4 x 4 mm ²	4 x 4 mm ²
Mains Connector (X2)	Harting Han-k4/0		
Power Consumption	16.5 kVA	16.5 kVA	16.5 kVA
DC-Output Connection			
DC-Cable JZ-600-Y-CY	2 x 16 mm ²	2 x 10 mm ²	2 x 6 mm ²
DC-Connection (X1)	Harting Han 2 MOD		
Cooling System			
Water Cooling	Flow > 3 l / min, 2 to 8 Bar, < 40° C		
Water Connection	Festo KQ2 10 mm (Option: Walther CT-003)		
Water Cooling Capacity	680 W	680 W	680 W
Air Cooling	Built-in fan, maximum ambient temperature 40° C		
Air Cooling Capacity	80 W	80 W	80 W
Fan Noise Emission	L _{pA} < 70 dB (A)		
Mechanical Data			
Size (without Plug)	Width: 218 mm (½ 19"), Height: 222 mm (3 HU), Length 645 mm		
Weight (without Packaging)	35 kg	35 kg	35 kg

Datasheet

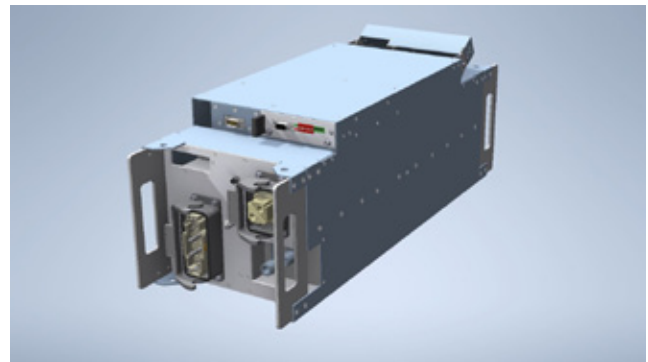
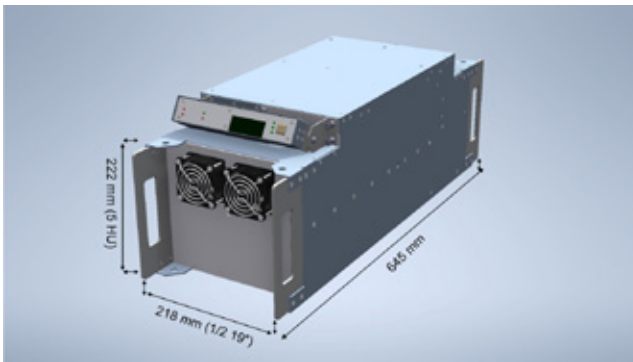
Technical Data

	HX 200/800	HX 250/800	HX 300/800
Operational Data			
Nominal Power	20 kW	25 kW	30 kW
Output Voltage	800 V	800 V	800 V
Output Current	40 A	50 A	60 A
Indication (Option)	3 ½-digit display for current, voltage and power		
Control	Current, voltage or power controlled		
Operation Mode	External via control interface		
Set Point	0 ... 100 % of nominal value for current, voltage or power		
Output Accuracy	+ / - 1 % of nominal value for current, voltage and power		
Arc Suppression	Quenching time: 2 µs to ca. 20 µs, automatically Delay time: 10 µs to ca. 50 µs, automatically		
Mains Input Connection			
Line Voltage	3 x 400 V, + / -10 %, 50/60 Hz, PE, (Option: 3 x 440 V or 3 x 480 V)		
Fusing	3 x 35 A	3 x 50 A	3 x 63 A
Mains Cable	4 x 6 mm ²	4 x 10 mm ²	4 x 10 mm ²
Mains Connector (X2)	Harting Han-k4/0		
Power Consumption	22 kVA	28 kVA	33 kVA
DC-Output Connection			
DC-Cable JZ-600-Y-CY	2 x 10 mm ²	2 x 10 mm ²	2 x 16 mm ²
DC-Connection (X1)	Harting Han 2 MOD		
Cooling System			
Water Cooling	Flow > 3 l / min, 2 to 8 Bar, < 40° C		
Water Connection	Festo KQ2 10 mm (Option: Walther CT-003)		
Water Cooling Capacity	900 W	1100 W	1300 W
Air Cooling	Built-in fan, maximum ambient temperature 40° C		
Air Cooling Capacity	100 W	110 W	150 W
Fan Noise Emission	L _{pA} < 70 dB (A)		
Mechanical Data			
Size (without Plug)	Width: 218 mm (½ 19"), Height: 222 mm (3 HU), Length 645 mm		
Weight (without Packaging)	37 kg	39 kg	41 kg



Datasheet

Dimensions



Exemplary illustration, display and rear view can differ, depending on device type, nevertheless, dimensions are the same.

© 2022 ADL Analoge & Digitale Leistungselektronik GmbH. All rights reserved.

ADL products are constantly improved. ADL therefore reserves the right to make technical changes without prior notice or obligation. To the best of our knowledge, the information contained in this product presentation (short version) is the most accurate available as the date of the current edition. The information is not binding.

We are happy to help!

ADL Analoge & Digitale Leistungselektronik GmbH
Bunsenstr. 30 · D-64293 Darmstadt
www.adl-gmbh.com

Customer Support

Tel. +49 (0) 6151 86072-41 or -42
Fax +49 (0) 6151 86072-75
E-Mail: sales@adl-gmbh.com