

Datasheet

Power Supplies for Ion Sources



Accelerator



Beam



Discharge



Cathode



Neutralizer

For the operation of ion sources (Kaufmann and ECR) special power supplies are available. On request, the units can also be equipped with other output voltages or output power. All supplies either have an analogue or digital interface.

★ Highlights

- ★ Wide range of uses in ion beam and plasma process technologies
- ★ Etching, sputtering and a lot more
- ★ Innovative applications, e.g. in micro-electronics, optics, sensors

We are happy to help!

ADL Analoge & Digitale Leistungselektronik GmbH
Bunsenstr  e 30 · D-64293 Darmstadt
www.adl-gmbh.com

Customer Support

Tel. +49 (0) 6151 86072-41 or -42
Fax +49 (0) 6151 86072-75
E-Mail: sales@adl-gmbh.com

Datasheet

Variants

Type	DC-Output			Order-No.
GG 03 Accelerator	300 W	1000 V	300 mA	09Z001
GG 03.1 Accelerator	30 W	1000 V	30 mA	09Z002
GG 08 Accelerator	800 W	1000 V	800 mA	09Z005
GG 12 Beam	1.2 kW	2000 V	1 A	09Z011
GG 12.1 Beam	200 W	2000 V	100 mA	09Z012
GIP 10 Neutralizer	990 W 25 W 25 W	33 V 25 V 25 V	30 A 1 A 1 A	09Z021
GIP 10.1 Neutralizer	990 W 2.5 W	33 V 25 V	30 A 0.1 A	09Z022
GDI 09 Discharge	900 W	150 V	6 A	09Z031
GC 10 Cathode	1 kW	35 V	30 A	09Z051

Options and Accessories - detailed Information see Datasheet "Accessories"

Type	Order-No.
Control Interfaces	
AS4 - analogue for U-, I- or P-Regulation	01Y001
AS4F - analogue for U-, I- or P-Regulation, fast Data Transfer	01Y021
AS6 - analogue for U-, I-, P-Limit Specification	01Y061
Profibus DP	01Y160
EtherCAT®	01Y170
RS232/485	01Y181

We are happy to help!

ADL Analoge & Digitale Leistungselektronik GmbH
Bunsenstr a e 30 · D-64293 Darmstadt
www.adl-gmbh.com

Customer Support

Tel. +49 (0) 6151 86072-41 or -42
Fax +49 (0) 6151 86072-75
E-Mail: sales@adl-gmbh.com

Datasheet

Technical Data

	GG 03 Accelerator	GG 03.1 Accelerator	GG 08 Accelerator	GG 12 Beam	GG 12.1 Beam
Operational Data					
Output Power	300 W	30 W	800 W	1.2 W	200 W
Output Voltage	Negative, max. 1000 V	Negative, max. 1000 V	Negative, max. 1000 V	Positive, max. 2000 V	Positive, max. 2000 V
Output Current	300 mA	30 mA	800 mA	1 A	100 mA
Indications	3 ½ digit display for voltage and current				
Control	Current or voltage controlled				
Operation Mode	Manually from front panel or external via control interface				
Set Point	0 ... 100 % of nominal value for current und voltage				
Output Accuracy	+ / - 1 % of nominal value for voltage or current				
Mains Input Connection					
Line Voltage	230 V, + / - 10 %, 50/60 Hz, PE				
Leistungsaufnahme	500 VA	100 VA	1000 VA	1500 VA	250 VA
Cooling System					
Air Cooling	Built-in fan, maximum ambient temperature 40° C				
Fan Noise Emission	$L_{pA} < 70$ dB (A)				
Mechanical Data					
Size	Width: 218 mm (½ 19"), Height: 132.5 mm (3 HU), Length 560 mm				
Weight (without Packaging)	11 kg				

We are happy to help!

ADL Analoge & Digitale Leistungselektronik GmbH
Bunsenstraße 30 · D-64293 Darmstadt
www.adl-gmbh.com

Customer Support

Tel. +49 (0) 6151 86072-41 or -42
Fax +49 (0) 6151 86072-75
E-Mail: sales@adl-gmbh.com

Datasheet

Technical Data

	GC 10 Cathode	GDI 09 Discharge
Operational Data		
Output Power	1 kW	900 W
Output Voltage	35 V, floating up to 2 kV	150 V, floating up to 2 kV
Output Current	30 A	6 A
Indications	3 ½ digit display for current and voltage	
Control	Current- voltage or power controlled	Current or voltage controlled
Operation Mode	Manually via front panel or external via control interface	
Set Point	0 ... 100 % of nominal value for current or voltage	
Output Accuracy	+ / - 1 % of nominal value for current or voltage	
Mains Input Connection		
Line Voltage	230 V, + / - 10 %, 50/60 Hz, PE	
Power Consumption	1200 VA	1200 VA
Cooling System		
Air Cooling	Built-in fan, maximum ambient temperature 40 C	
Fan Noise Emission	$L_{pA} < 70$ dB (A)	
Mechanical Data		
Size	Width: 218 mm (½ 19"), Height: 132.5 mm (3 HU), Length 560 mm	
Weight (without Packaging)	11 kg	

Datasheet

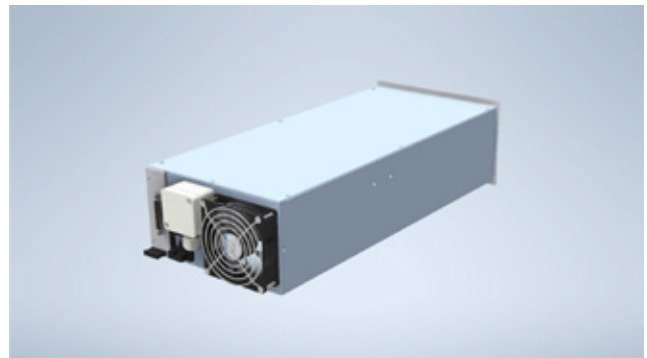
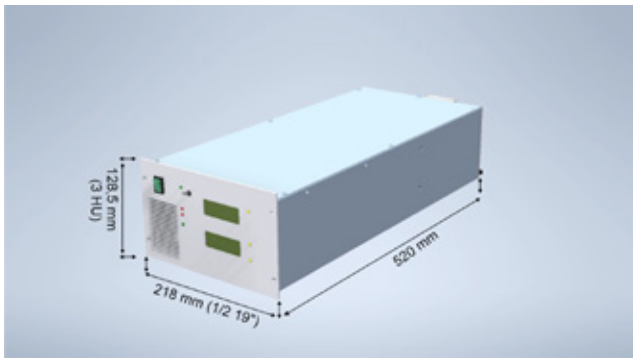
Technical Data

	GIP 10 Cathode	GIP 10 Discharge	GIP 10 Emission	GIP 10.1 Cathode	GIP 10.1 Emission
Operational Data					
Output Power	990 W	25 W	25 W	990 W	2.5 W
Output Voltage	33 V	25 V	25 V	33 V	33 V
Output Current	30 A	1 A	1 A	30 A	0.1 A
Indications	3 ½ digit display for emission and filament current				
Control	Emission or filament current controlled				
Operation Mode	Manually via front panel or external via control interface				
Set Point	0 ... 100 % of nominal value for emission or filament current				
Output Accuracy	+ / - 1 % of nominal value for emission or filament current				
Mains Input Connection					
Line Voltage	230 V, + / -10 %, 50/60 Hz, PE				
Power Consumption	1200 VA	1200 VA	1200 VA	1200 VA	1200 VA
Cooling System					
Air Cooling	Built-in fan, maximum ambient temperature 40° C				
Fan Noise Emission	$L_{pA} < 70$ dB (A)				
Mechanical Data					
Size	Width: 218 mm (½ 19"), Height: 132.5 mm (3 HU), Length 560 mm				
Weight (without Packaging)	11 kg				



Datasheet

Dimensions



Exemplary illustration, front panel and rear view can differ, depending on device type, nevertheless, dimensions are the same.

© 2022 ADL Analoge & Digitale Leistungselektronik GmbH. All rights reserved.

ADL products are constantly improved. ADL therefore reserves the right to make technical changes without prior notice or obligation. To the best of our knowledge, the information contained in this product presentation (short version) is the most accurate available as the date of the current edition. The information is not binding.

We are happy to help!

ADL Analoge & Digitale Leistungselektronik GmbH
Bunsenstr. 30 · D-64293 Darmstadt
www.adl-gmbh.com

Customer Support

Tel. +49 (0) 6151 86072-41 or -42
Fax +49 (0) 6151 86072-75
E-Mail: sales@adl-gmbh.com